

S A B I N E



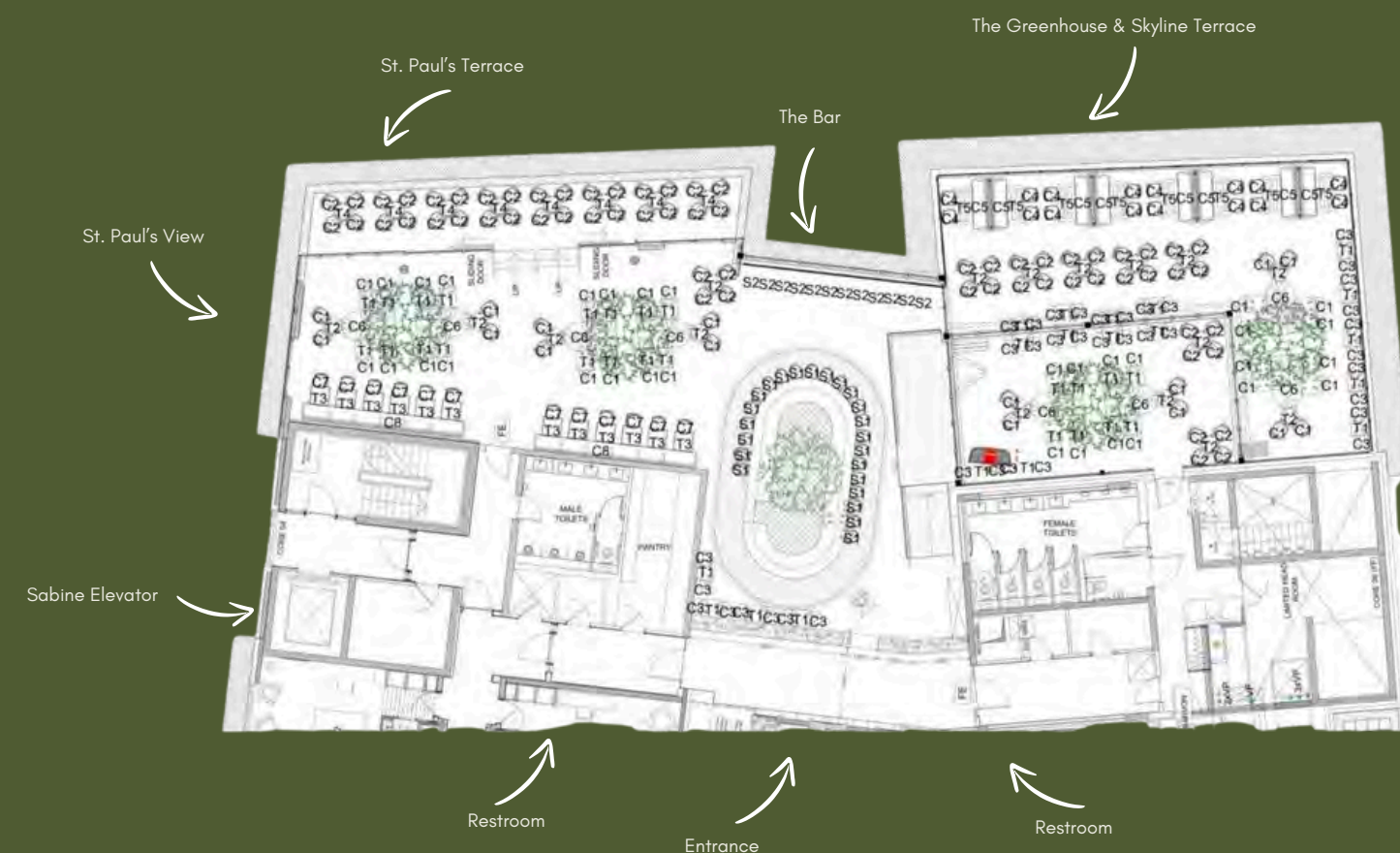
About Us

Opening in 2021 and nestled on the roof of the Leonardo Royal Hotel London St. Paul's, serving spectacular cocktails and views, Sabine brings the destination vibe to St. Paul's. Named after the striking bird which travels the world as the seasons change, Sabine pays homage to the bird's shifting migration patterns by offering something for all weather, seasons, or moods.

The rooftop is an oasis from the City, allowing guests to migrate into different spaces away from the busy London streets. With a heated outdoor terrace and glass roof, every angle is right for a great evening out. From after-work drinks to weekend lounging, Sabine is the perfect place for a secret escape, offering something for everyone.

Guests will be transported away from the pressures of the City to this sanctuary, where seasonal cocktails, local gins, and a selection of delicious small plates and bar snacks await. The evenings are active with live musicians and DJs, making Sabine the hot spot destination for local workers and city visitors. Bookable event spaces come with a stunning view of St. Paul's Cathedral. At Sabine, we create year-round drinking experiences for everyone, no matter the season.

Floor Plan



| Area | Capacity | Set Up |
|----------------------------------|-----------------|--------------------------|
| The Greenhouse | 25 - 50 Guests | Mixed Seating & Standing |
| Skyline Terrace | 25 - 50 Guests | Mixed Seating & Standing |
| The Greenhouse & Skyline Terrace | 50 - 100 Guests | Mixed Seating & Standing |
| Indoor | Up to 60 Guests | Mixed Seating & Standing |
| St Paul's Terrace | Up to 30 Guests | Mixed Seating & Standing |
| Indoor & St Paul's Terrace | 50 - 100 Guests | Mixed Seating & Standing |
| After Work Drinks | Up to 20 Guests | Mixed Seating & Standing |

**Minimum Spends Apply*

Event Spaces



The Greenhouse



The Skyline
Terrace



St. Paul's View
Indoor & Terrace

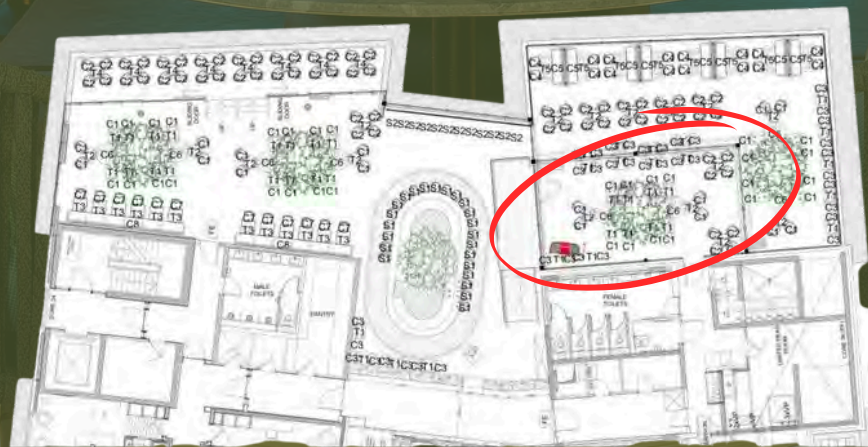


After Work Drinks

The Greenhouse

With breathtaking views over the London skyline, our private room accommodates 25-50 guests and features a retractable roof, flexible layout, heaters, and glass walls that open onto our Skyline Terrace. When booked together, this space is ideal for hosting 50-100 guests with a mixture of seating and standing guests.

Enhance your event with a private bottle bar and dedicated food area, in addition to the main bar, ensuring an exclusive and memorable experience for your guests.



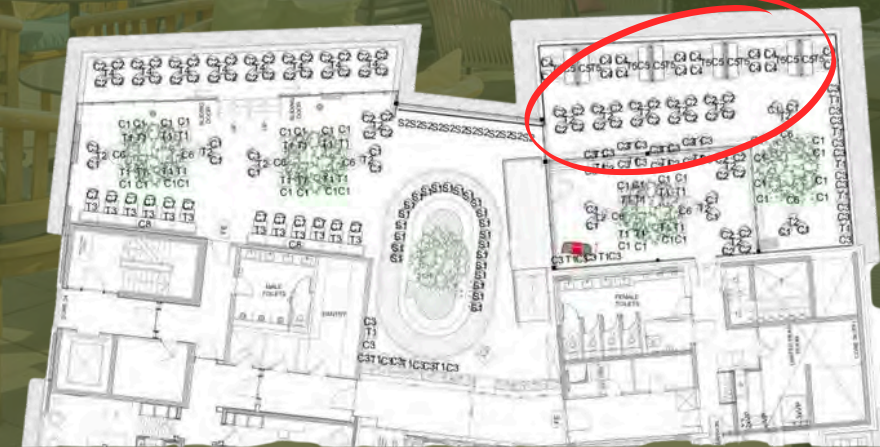
**Minimum Spends Apply*

Skyline Terrace

With stunning views of the iconic St. Paul's Cathedral and as far as Canary Wharf, our Skyline Terrace offers an exclusive outdoor space for 25-50 guests. For larger gatherings, this space can be seamlessly combined with The Greenhouse.

Featuring versatile outdoor tables for both seated and standing guests, the Skyline Terrace is perfect for any occasion. Enhance your event with a private bottle bar and dedicated food area, in addition to the main bar, ensuring an exclusive and memorable experience for your guests.

This private space is also ideal for summer barbeques.



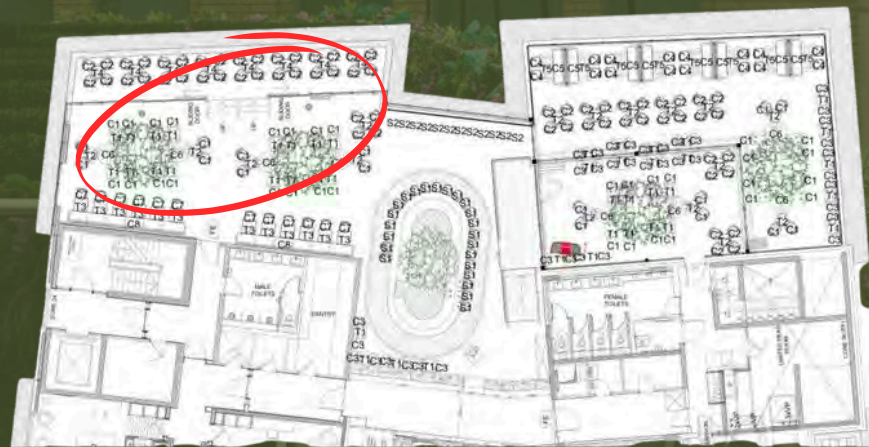
**Minimum Spends Apply*

St. Paul's Indoor & Terrace

Providing more protection from the elements than The Greenhouse, St. Paul's View Indoor features its own outdoor terrace. When combined, these areas can accommodate up to 100 guests, offering a mix of seated and standing options with unique, direct views of St. Paul's Cathedral.

St. Paul's View Indoor can host up to 60 guests, while St. Paul's View Terrace can accommodate up to 30 guests when booked individually.

Enhance your event with a private bottle bar and dedicated food area, in addition to the main bar, ensuring an exclusive and memorable experience for your guests.



** Minimum Spends Apply*

After Work Drinks

For those seeking a more informal after-work drink or a gathering for smaller groups, we offer limited tables and standing areas around the bar, perfect for taking in the views of St. Paul's Cathedral.

Nestled around the bar, this intimate area provides an ideal setting for casual conversations over expertly crafted drinks and delicious nibbles. With its stunning rooftop views of London, it is the perfect spot to relax, connect, and enjoy a laid-back evening.

Suitable for up to 20 people with a mix of seating and standing options. This area does not need to be booked in advance, though can be through our team.



ROOFTOP BAR

Private Hire

If you're seeking a more private setting, our venue offers two exceptional outdoor spaces with a combined capacity of up to 200 guests. This rooftop oasis boasts enchanting views of London's skyline, the iconic St. Paul's Cathedral, and the Thames, making it the ideal choice for your event.

Whether you're planning a summer barbecue, an office celebration, or a festive outing, this versatile space provides numerous options to suit your needs. The stunning backdrop of the city, coupled with our flexible layout, ensures that your event will be both memorable and unique. Enhance your gathering with our range of amenities, including a private bottle bar and dedicated food area, in addition to the main bar. Our team is committed to creating an exclusive and unforgettable experience for you and your guests.



** Minimum Spends Apply*

Entertainment

Sabine provides top-tier entertainment, featuring both resident DJs and external talent.

For corporate events, we offer comprehensive AV management, including screens, sound systems, and presentation equipment.

With exclusive hire, you can elevate your event with live acoustic performances, DJs, and bands.

| Type | Price £ | Duration |
|-------|---------|----------------|
| Solos | 300 | 2 x 45 min set |
| Duos | 474 | 2 x 45 min set |
| Trios | 714 | 2 x 45 min set |
| Bands | 1794 | 2 x 45 min set |
| DJs | 714 | 2 x 45 min set |

** Guide Pricing Above*

Drinks

** Kindly note that these packages are applicable for group bookings between 10-49 pax **

Beer

Menabrea Blonde Lager

20 Bottles @ £130.00 / 40 Bottles @ £250.00

15 Bottles x Menabrea Blonde Lager &
5 Bottles x Goose Island IPA / Orchard Pig Cider
@ £130.00

Wine

Allumea Grillo Organic Chardonnay / Pays D'Oc Crusan Grenache- Merlot

/ Chateau de Berne Esprit

3 x Bottles @ £120.00 / 6 x Bottles @ £232.00

Belle Perle Picpoul de Pinet / Catena Apellation Cabernet Sauvignon / Ultimate Provence Rosé

3 x Bottles @ £146.00 / 6 x Bottles @ £292.00

Bubbles

Mionetto Prestige Prosecco

3 x Bottles @ £150.00

Louis Pommery English Sparkling

3 x Bottles @ £220.00

Louis Pommery Brut Royal Champagne NV

3 x Bottles @ £290.00

**Six Glasses Per Bottle*

The background image is a soft-focus photograph of a social setting. On the left, a hand holds a tall glass of beer with a thick head of foam. In the center, a cocktail shaker is visible. On the right, a white rectangular tray holds several small, round appetizers, possibly dumplings or sliders, topped with a white sauce and sesame seeds. The entire image is overlaid with a semi-transparent dark green filter.

Food

Meat & Fish

Harissa-Spiced Chicken Skewer, Garlic Yogurt

Slow-Braised Beef Slider, Kimchi & Gochujang Mayo

Lamb & Mint Kofta, Cucumber Raita

Wrapped Sausages in Streaky Bacon, Honey & Mustard Glaze

Crispy Calamari, Yuzu Aioli

Shavers

Gourmet Charcuterie*

Cornichons, roasted red pepper, Dijon mustard, cultured butter, toasted sourdough

Mezze (vg)*

Beetroot falafel, marinated feta, muhammara, hummus, olives, grilled artichokes, pickled vegetables, spinach flatbreads

Vegetarian & Vegan

Freshly Baked Sourdough Bread, Whipped Truffle Butter

& Black Sesame Seeds (V)

Spicy Cheese Taquitos, Chipotle Mayo (V)

Jackfruit Slider, Pineapple Teriyaki Glaze (VG)

Crisp Potatoes, Rosemary Sea Salt (VG)

Dessert

Chocolate Brownie Chunks, Berry Coulis (V)

Mulled Wine & Winter Berry Mess,
Vegan Chantilly Cream & Meringue (VG)

VG - Vegan

V - Vegetarian

Hours

November - February

Monday : Private Hire Only (Bar Closed)

Tuesday : 15:00 - 23:00

Wednesday : 15:00 - 23:00

Thursday : 15:00 - 01:00

Friday : 12:00 - 01:00

Saturday : 12:00 - 01:00

Sunday : Closed

March - October

Monday : 3pm - 11

Tuesday : 15:00 - 23:00

Wednesday : 15:00 - 23:00

Thursday : 15:00 - 01:00

Friday : 12:00 - 01:00

Saturday : 12:00 - 01:00

Saturday : 12:00 - 01:00

Location & Booking

Sabine Rooftop Bar

10 Godliman Street

London

EC4V 5AJ

www.Sabinelondon.co.uk



SabineStPaulseleonardohotels.co.uk



[@Sabinerooftopbar](https://www.instagram.com/Sabinerooftopbar)

Terms & Conditions

Loss/Damage

The Client must cover any damages or liabilities caused by them or their guests. The Bar is not responsible for property loss or damage unless due to negligence. The Client must obtain the Bar's consent for outside suppliers.

Food

Food will be removed 90 minutes after serving for safety reasons.

Force Majeure & Liability

The Bar is not liable for events beyond its control, such as strikes, disasters, or government restrictions. Liability is capped at the amount paid by the Client.

Cancellation Charges

- 3-1 months: 30%
- 1 month-2 weeks: 50%
- Less than 2 weeks: 100%

Complaints

Any issues must be raised with management during the event for resolution.

Termination

The Bar can terminate the contract if the Client breaches its terms.

Governing Law

English law applies.

Frequently Asked Questions

Is there a minimum age requirement to enter?

You must be 21 years of age or over. ID may be required.

I made a booking but haven't received a confirmation.

This may be in spam, please double-check your emails. If you have still not received a confirmation email please email SabineStPauls@leonardohotels.co.uk.

Bookings over 6 people?

Yes. Please email the team SabineStPauls@leonardohotels.co.uk to enquire

Do you charge a minimum spend?

£50pp minimum spend applies to tables for 1-6 people in the Green House and on the Terrace.

Minimum spend does not apply to indoor tables. This includes either food or drink bookings.

Dress Code

Our dress code is smart casual. We do not allow sportswear, hoodies, caps and flip-flops.

S A B I N E

